

### Features & Benefits

#### *Flexibility:*

Applied typically when applications are beyond the scope of an electromagnetic drive. I.E. when units require length > 5 ft. and >18" width.

#### *Gentle Handling:*

Provides the absolute minimum vibration transfer insuring the gentlest handling of the product.

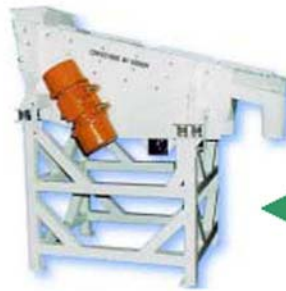
#### *Easy Installation:*

No major foundations are required; therefore installation is easy and inexpensive.

#### *Reliability:*

Because Gough designs its equipment to handle the specific application – it has year after year reliability.

Model : Twin Rotary Feeders/Screens



*Twin rotary vibratory classifier, with quick change screens to grade peanuts into four grades.*



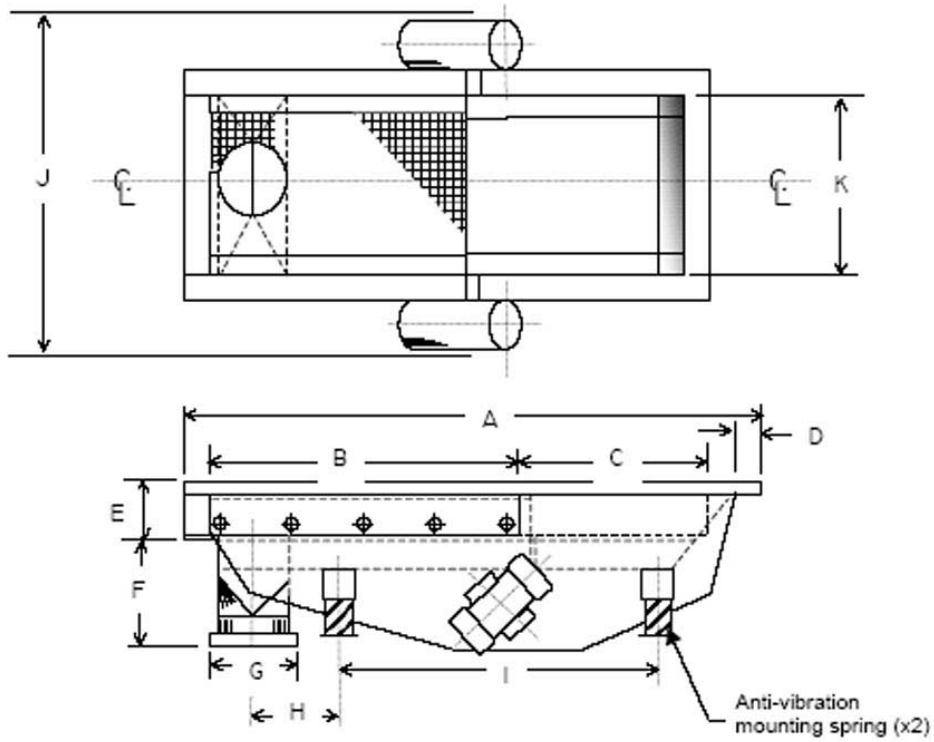
*De-dusting conveyor powered by contra-rotating motors to remove excess sugar from jellied sweets.*



*Mobile conveyor powered by contra-rotating vibrator motors handling tortilla chips.*



Dimensional Data:



Dimensions (Inches)

A _____	E _____	I _____
B _____	F _____	J _____
C _____	G _____	K _____
D _____	H _____	

