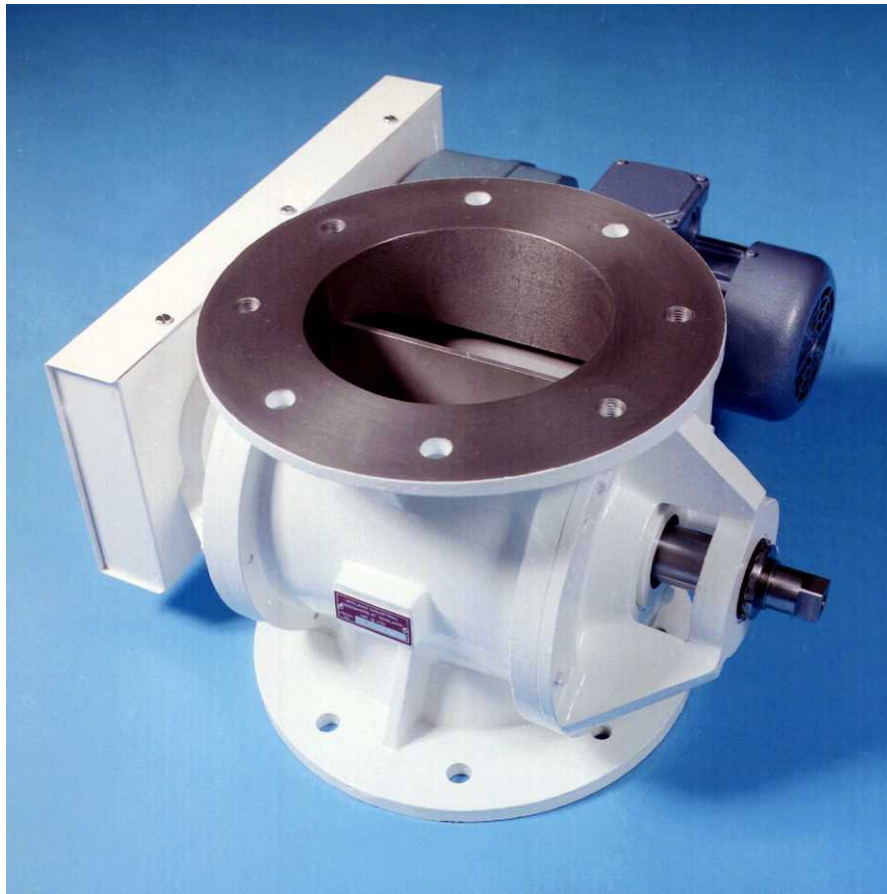




Rotary Valves Type MV



Applications

- Feeding and metering powders and granules
- Providing an airlock between a silo and a blowing line

Standard features

Cast iron body
Fabricated carbon steel rotor
Outrigged sealed for life bearings
Double lip type shaft seals
Electrically driven via a guarded chain drive from an IP55 gearmotor
BS4504 PN6, DIN2501 PN6, ANSI 150 round inlet and outlet

Optional features

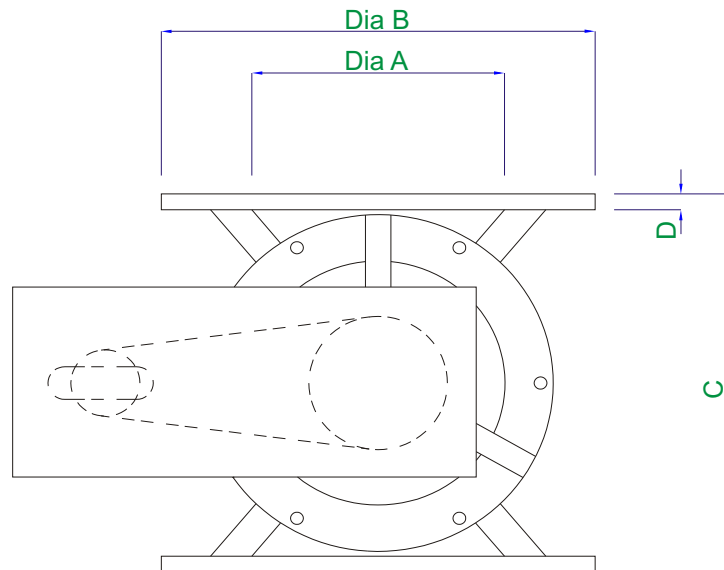
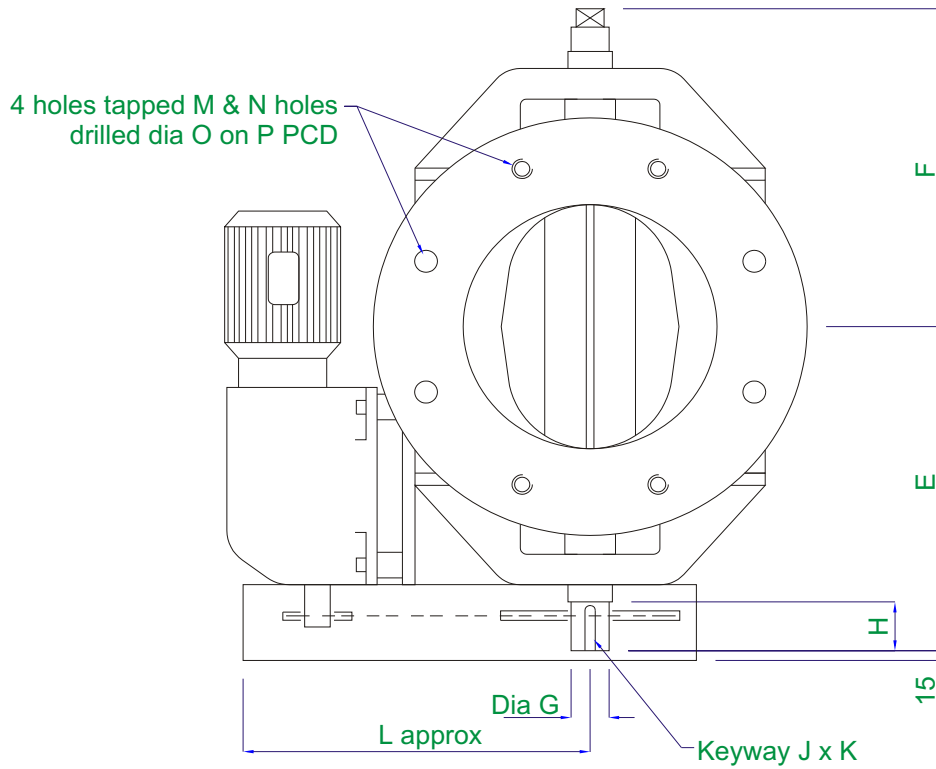
Range of body and rotor materials (aluminum, stainless steel . . .)
Various rotor tip styles (friction relieved, polyurethane, adjustable high carbon . . .)
Stuffing box shaft seals
Mechanical, virtually maintenance free shaft seals
Air purged seals
Quick release rotor for frequent cleaning operations
Alternative drives
High temperature version
Alternative flange drilling

For aggressive applications we recommend the TWA extreme duty rotary valve

Midland Industrial Designers Limited
Common Lane, Watnall, Nottingham, England NG16 1HD
T: (+44)(0)115 9382154 F: (+44)(0)115 9386315
E: enquiry@mid.uk.com W: www.mid.uk.com
Manufacturers of powder handling equipment since 1962



Rotary Valves Type MV



Size	A	B	C	D	E	F	G	H	J	K	L	M	N	O	P	ft ³ /rev	l/rev	kW
150	150	280	250	12	228	223	22	35	6	3.5	298	16	4	18	225	0.088	2.5	0.12
200	200	342	310	13	265	260	30	40	8	4	362	16	4	18	280	0.22	6.2	0.37
250	250	406	380	15	292	287	30	40	8	4	395	16	8	18	335	0.50	14.0	0.55
300	300	482	450	18	352	337	35	55	10	5	480	20	8	23	395	0.73	20.6	0.75
350	350	533	520	18	377	362	35	55	10	5	520	20	8	23	445	1.15	32.5	1.10
400	400	596	580	20	414	399	40	55	12	5	585	20	12	23	495	1.75	49.5	1.50
500	500	698	670	20	465	450	50	55	12	5	690	20	16	23	600	3.24	91.7	2.20

Midland Industrial Designers Limited

Common Lane, Watnall, Nottingham, England NG16 1HD

T: (+44)(0)115 9382154 F: (+44)(0)115 9386315

E: enquiry@mid.uk.com W: www.mid.uk.com

Manufacturers of powder handling equipment since 1962