



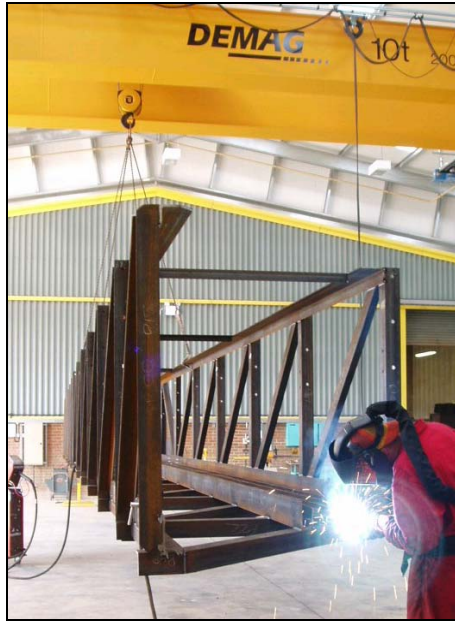
**T H WHITE**  
In more fields than you imagine

T H WHITE INSTALLATION Ltd  
William Road,  
Devizes, Wilts, SN10 3EW  
Tel: 01380 723040  
Fax: 01380 725707  
Email: [projects@thwhite.co.uk](mailto:projects@thwhite.co.uk)  
[www.thwhite.co.uk](http://www.thwhite.co.uk)

## **MATERIALS HANDLING & BULK STORAGE ENGINEERS**

**Specialists in the design and construction of facilities for the grain, malting, animal feed and food industries nationwide. We offer unbiased advice on plant and equipment selection and full project management from concept design through to commissioning. With a long established reputation for delivering a high quality and responsive service based upon a strong empathy with its customers, our philosophy is unchanged: namely, to offer exceptional value and technical support.**





## **FABRICATION**

The Company has its own, fully equipped fabrication shop for the manufacture of chute work, hoppers, silo walkways, structural steelwork and other specialist items required on projects.

Arrangements exist with local specialists for hot-dip galvanising or paint treatment.



## **ACTIVITIES PROFILE**



The Company specialises in the Design and Construction of industrial Bulk Storage and Materials Handling Projects in the field of granular and free flowing materials for the Grain, Malt, Animal Feed, Food and Plastics industries.

Typical materials handled include cereals, oil seed, pulses, malt, meals and derivatives, dust, sugar, molasses, spent grains, acetate flakes, cellulose powder, sand and ceramic wool.

This flexibility allows the provision of as much or as little design and engineering support, as the customer requires. Since it does not manufacture proprietary equipment we are able to provide customers with unbiased advice upon product selection on the basis of specification, cost, performance and previous supplier experience.



Storage systems are provided using either galvanised flat or hopper bottom silos in a wide range of capacities or alternatively in fabricated welded or bolted plate construction depending upon material flow characteristics and application. Transfer methods include chain, en masse or screw conveyors, belt and bucket elevators or pneumatic systems together with the provision of associated bin dischargers, support structures, process plant, chutework and dust filtration equipment.

The Company's activities may relate to a customer-led specification, or to its ability to provide its own design and specification against a customer's initial performance brief and it has a reputation for its quality of design, service and construction resulting from many years of experience over a varying range of applications. Personnel have the facilities and experience to advise, manage and co-ordinate every stage of a project through to commissioning and service support.

From a technical standpoint the Company is fully capable of undertaking all design and implementation requirements for a range of projects, has a strong financial base, a sound management structure and enjoys a reputation for quality and workmanship all as a result of many years experience since the Company's formation in 1978.

Investment has been made in setting up the necessary documentation and systems of work to enable the Company to both comply with and administer the Construction (Design and Management) regulations, which now apply to almost every project undertaken.

## **PROJECT MANAGEMENT**

In meeting CDM regulations we are happy to act as both Planning Supervisor and/or Principal Contractor embracing the preparation of risk assessments, method statements and 'on-site' supervision. Completed plant is designed to comply with the Machinery Regulations and the Company's Certificate of Compliance issued upon completion.

To ensure continuity, experienced project engineers assume responsibility from enquiry stage through to completion, backed up by a design office using the latest CAD equipment. A close working relationship with the customer together with a detailed knowledge of his requirements is, therefore, retained throughout all stages of work. An engineer supervises site works on a regular basis whilst, on larger projects, a resident engineer will assume this responsibility.

Contracts valued up to £3M have been carried out across UK.

Work undertaken ranges from the supply of individual items of equipment and plant modifications through to complete 'turn-key' projects with responsibility for all aspects of design and scheme implementation including project management, procurement, site supervision, erection and commissioning.



## **ARCHIVES**

Full records of each contract are maintained in a comprehensive library enabling the rapid and accurate retrieval of information should this be required either during construction or for subsequent reference.