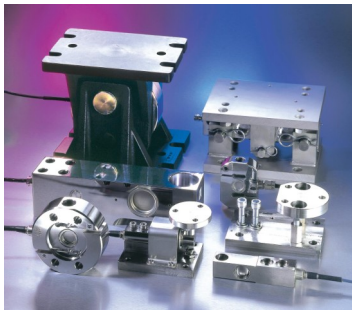




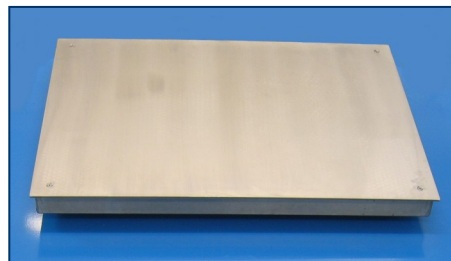
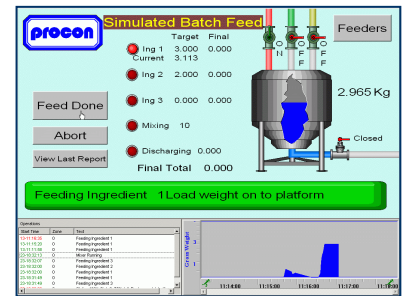
Procon Engineering

(A Division of National Oilwell Varco UK Limited)

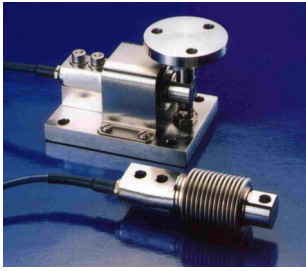
Weighing Products & Process Control Systems



- Load Cells & Mounting Kits
- Safety Critical Systems
- Nuclear Build Load Cells
- Custom Built Load Cells
- Platform & Bench Scales
- Check Weighers
- Weight Indicators, Controllers & Transmitters
- Batch & Process Controllers
- Loss in Weight Systems
- Beltweighers & Weigh Feeders
- Airport Baggage Scales
- ATEX & Legal for Trade Systems
- Application & System Software
- PLC's, HMI's and SCADA



LOAD CELLS & MOUNTING KITS



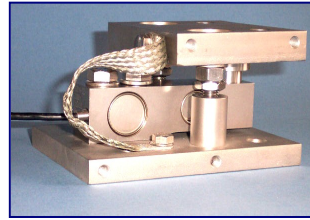
LP20 Bending Beam

5kg to 300kg
IP68 Stainless Steel
ATEX & OIML Approved
Range of Mounting Kits



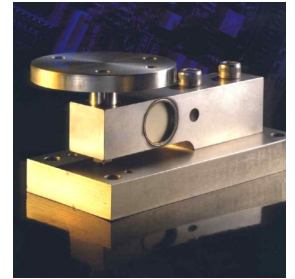
LP33 Shear Beam

500kg to 40,000kg
IP67 Stainless Steel
ATEX & OIML Approved
Range of Mounting Kits



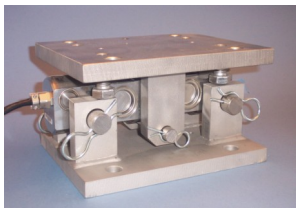
LP35 Shear Beam

500kg to 5000kg
IP68 Stainless Steel
ATEX & OIML Approved
Mounting Accessories



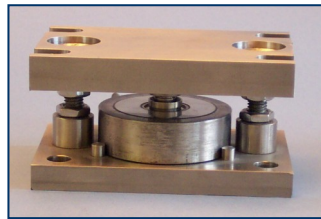
7188 Shear Beam

500kg to 20000kg
IP68 Stainless Steel
ATEX Approved
Range of Mounting Kits



LP44 Shear Beam

2te to 200te
IP68 Stainless Steel Double
Ended Load Cell
Stainless or Treated Mount Assy



LP55 Ring Torsion Load Cell

250kg to 60te
IP68 Stainless Steel
Stainless Steel Mounting Kits up
to 10te
ATEX & OIML Approved



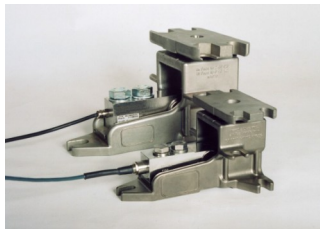
LP50 Compression Cell

Up to 750 tonnes
IP65 Stainless Steel
Low Profile
Custom built to application



LP73 Tension 'S' Beam

50kg to 10000kg
IP67 Stainless Steel
OIML R60 3000 divisions
Rose Bearing & Rod Ends



LeverMount

500kg to 5000kg
IP68 Stainless Steel Load cell
Unique Mount Assembly
ATEX & OIML Approved



MasterMount

2te to 30te
IP68 Stainless Steel Load Cell
Unique Mount Assembly
ATEX Approved



Nuclear Build & Safety Critical versions

Single, Dual & Triple-Bridge
Load Pins and Load Cells
Capacities to Suit
**Bespoke designs and custom
built for applications in
accordance with
BS EN 61508**



SP90 Load Pins

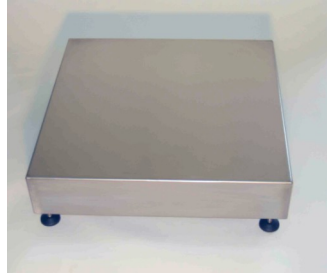
2000kg to 50000kg
IP67 Stainless Steel
Standard & custom designs
available

PLATFORM & BENCH SCALES



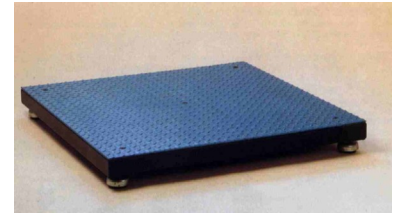
1540 Platform Scale

205mm to 705mm Square
3kg to 300kg
Mild Steel & Stainless Steel Options
ATEX & W & M Approved



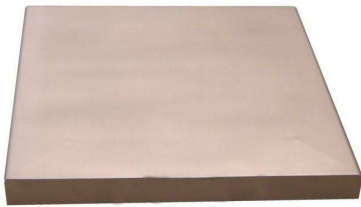
SCP (Single Cell) Platform Scale

300mm x 1000mm Square
3kg to 300kg plus
Mild Steel & Stainless Steel Options
ATEX & W & M Approved



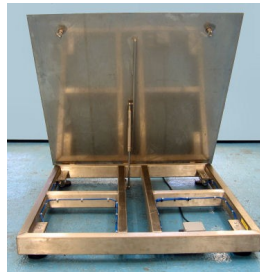
1530 Platform Scale

800mm to 3000mm Square
300kg to 10000kg
ATEX & W & M Approved
EC Approved 4 x R60 Load Cells
Mild Steel or SS Construction
Freestanding or Pit Mounted



FCP (Four Cell) Platform Scale

Standard Sizes to 1.5m Square
300kg to 6000kg
ATEX & W & M Approved
Mild Steel or Stainless Steel Construction
Freestanding or Pit Mounted



FCGLP (Four Load Cell Gas Lift) Platform Scale

From 1m to 1.5m Square
300kg to 1000kg & 600kg to 3000kg
ATEX & W & M Approved
Mild Steel or Stainless Steel Construction
Freestanding or Pit Mounted



1534 Hose-down Platform Scale (Food, Chemical & Pharmaceutical)

1000mm & 1200mm Square
300kg & 600kg
Lightweight Polypropylene Top Plate
IP68 Stainless Steel Load Cells
Electro-Polished SS Framework Options
SS Freestanding Column Option



MW1533 Mobile Weighing Platform

625mm x 625mm Platform Size
300kg Capacity
Two Wheels, Push Handle, Fold Over Ramp
Bracket for Indicator (*Indicator is extra to suit application*)
Mild Steel or Stainless Steel Construction
ATEX Approved



TPS Hand Pallet Truck Scale

Fork Width 555mm Overall
Four Load Cell Design
Maximum Capacity 2000kg
Backlit 52mm LCD Display
Built-in Rechargeable Battery up to 60 Hours Operation
Waterproof Junction Box
Optional Built-in Mini Printer



Bench or Small Platform Scales

Up to 600mm Square Platform
6kg x 300kg Capacities
Stainless Steel with Pedestal
Weight Indicators to suit application

WEIGHING INSTRUMENTATION



EP52 (EP50 MKII) Batch & Process Controller

IP65 Front Panel with Graphics Display
Serial/Analogue Outputs
Ethernet IP / Modbus / Profibus DP Options
Safety Critical, Loss in Weight & Beltweigher Versions



EP3000Ex Industrial Weigh Terminal

IP67 Stainless Steel Enclosure
Panel, Wall or Desk Mountable
ATEX & W & M Approved
Analogue or Serial Output Options
Set Point Options



EP3000 Weight Indicator/Controller

IP67 Stainless Steel Enclosure
Panel, Wall or Desk Mountable
W & M Approved
Ethernet, Analogue or Serial Output Options
Set Point Options



EP1000 Indicator/Controller

IP67 Stainless Steel Enclosure
Panel, Wall or Desk Mountable
W & M Approved
Analogue or Serial Output Options
Set Point Options



VT200 Wall Mount Weight Indicator

IP65 Stainless Steel Enclosure
Dual Weigh Scale Operation
W & M Approved
Analogue or Serial Output Options
Two Set Points



EP23 Weight Indicator/Controller

6 Digit, 20mm LED Display
Panel Mount or Wall Box Option
Ten Point Linearisation
Four Relay Trip outputs
Analogue & Serial Output Options



EP500 Panel Mount Weight Indicator

6 Digit LED Display
Two Set Point Outputs
Analogue or Serial Output Options
Profibus DP or DeviceNet Option



EP400 DIN Rail Mount Weight Indicator

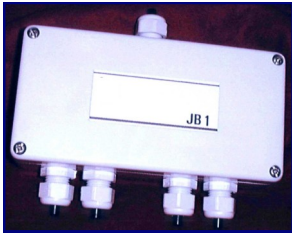
IP66 Field Mount Option in SS Box
Two Set Point Outputs
Analogue or Serial Output Options
Profibus DP or DeviceNet Option



EP100 & EP101 Airport Baggage Operator & Passenger Displays

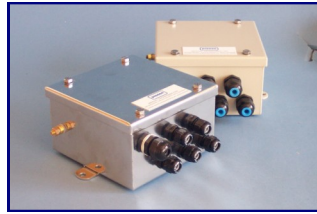
Totaliser and Bag Count
Overweight Bag Relay Output
Total Flight Bag Weight Option
EC and OIML Approvals

WEIGHING ACCESSORIES



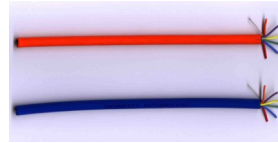
JB1 Junction Box

IP65 Protection
ABS Housing
PCB Mounted Terminals



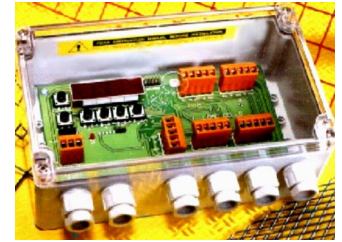
LA01 Junction Boxes

IP67 Protection
Painted or Stainless Steel
Tachometer Connection
Optional Balancing Resistors



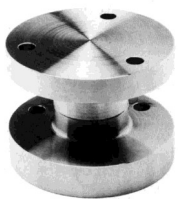
6 Core Screened Interconnection Cable

Compatible with all Procon
Strain Gauge Load Cells
High Noise Immunity
Suitable for Hazardous Areas



IJB Intelligent Junction Box

Displays Individual Load Cell
Outputs
LED Direct Millivolt Readout
IP65 Protection
DIN or PCB options
Alarm Contact Outputs



Pivots

Capacity 50 tonne Maximum
Stainless Steel



LCS2 Load Cell Simulator

In-house or On-site Simulation
0mV to 36mV Output
Excitation Indicator
Four Cell Simulation



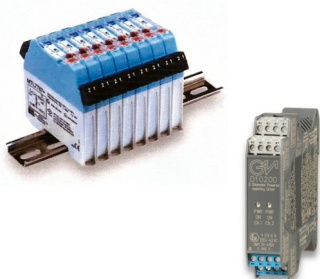
Digital Panel Meters

5 Digit. 14.2mm LED Display
Front Sealed to IP65
Analogue and Serial Options
Alarm Output Options



Large Digital Displays

4, 6 or 8 Digit LED's
57mm to 400mm High
Sealed to IP65
Serial or Analogue Outputs
Wall, Panel or Suspension
Mounts



MTL Barriers & GM Isolators

ATEX Approved
Shunt Diode
Zener Options
Galvanic Isolated Options



Hazardous Area Indicators

3½ Digit LCD Display
ATEX Approved
IP65 & IP66 Protected
Field or Panel Mounted



Hazardous Area Indicators

4½ Digit LCD Display
ATEX Approved
IP65 & IP66 Protected
Field or Panel Mounted

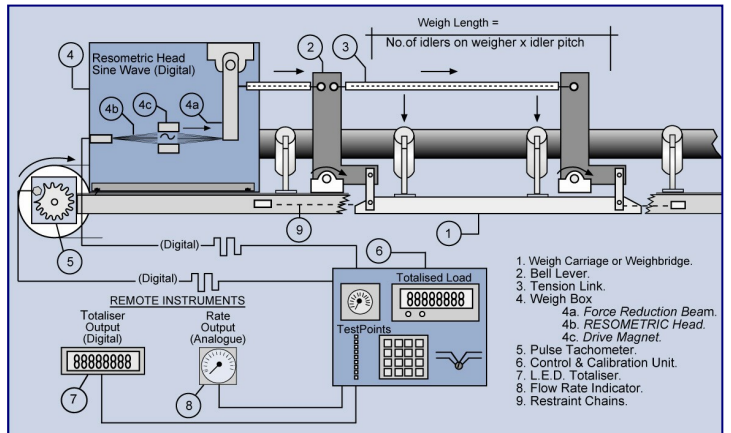


Printers

Document or Label
USB, Parallel or Serial
Interfaces
Desktop or Panel Mount
Versions

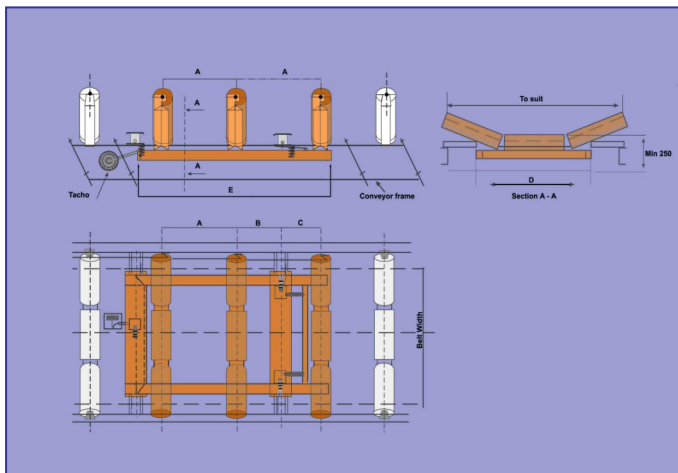
BELTWEIGHERS

Digital / Resometric Design (High Accuracy)



- Capacities up to 12000 tonnes/hour
- High accuracies to 0.1%
- Conveyor widths for 400mm to 2200mm
- Long-term calibration stability
- Astatic Mass Zero Compensation (for changing angles plus 18 to minus 18 degrees)

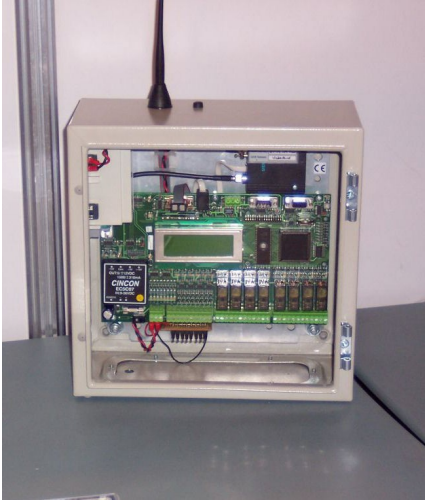
Load Cell Design



- Conveyor widths: 600mm to 2000mm
- Flow rates: up to 5000 tonnes/hour
- Single or multi-idler design
- Load cells: 1, 2 or 3 accuracy dependent
- Accuracy 0.5% to 5% on application

OTHER PROCON PRODUCTS & SYSTEMS

Telemetry



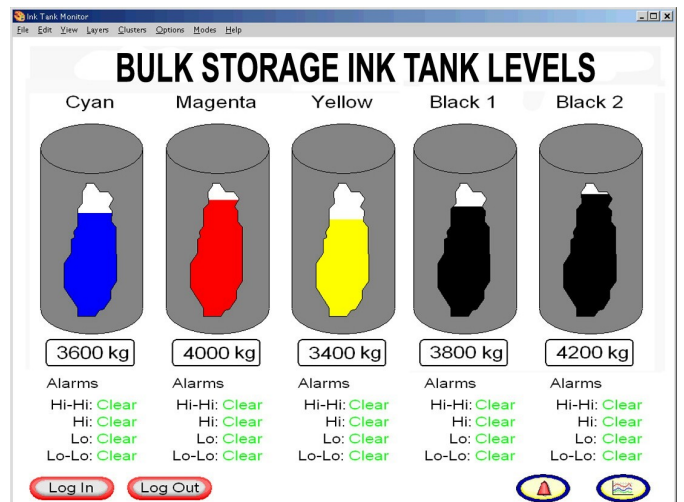
Drum Weighing



Check Weighers



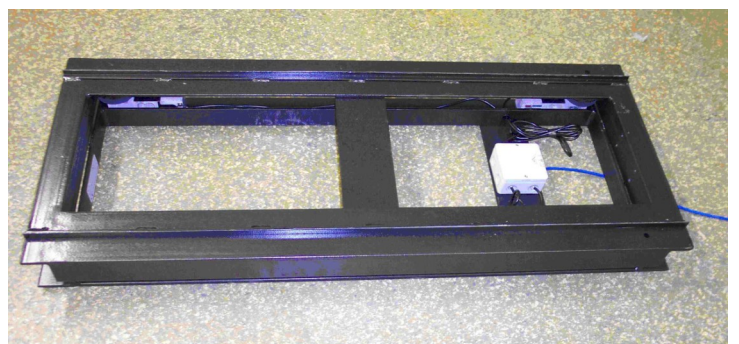
PLC's, HMI's and SCADA

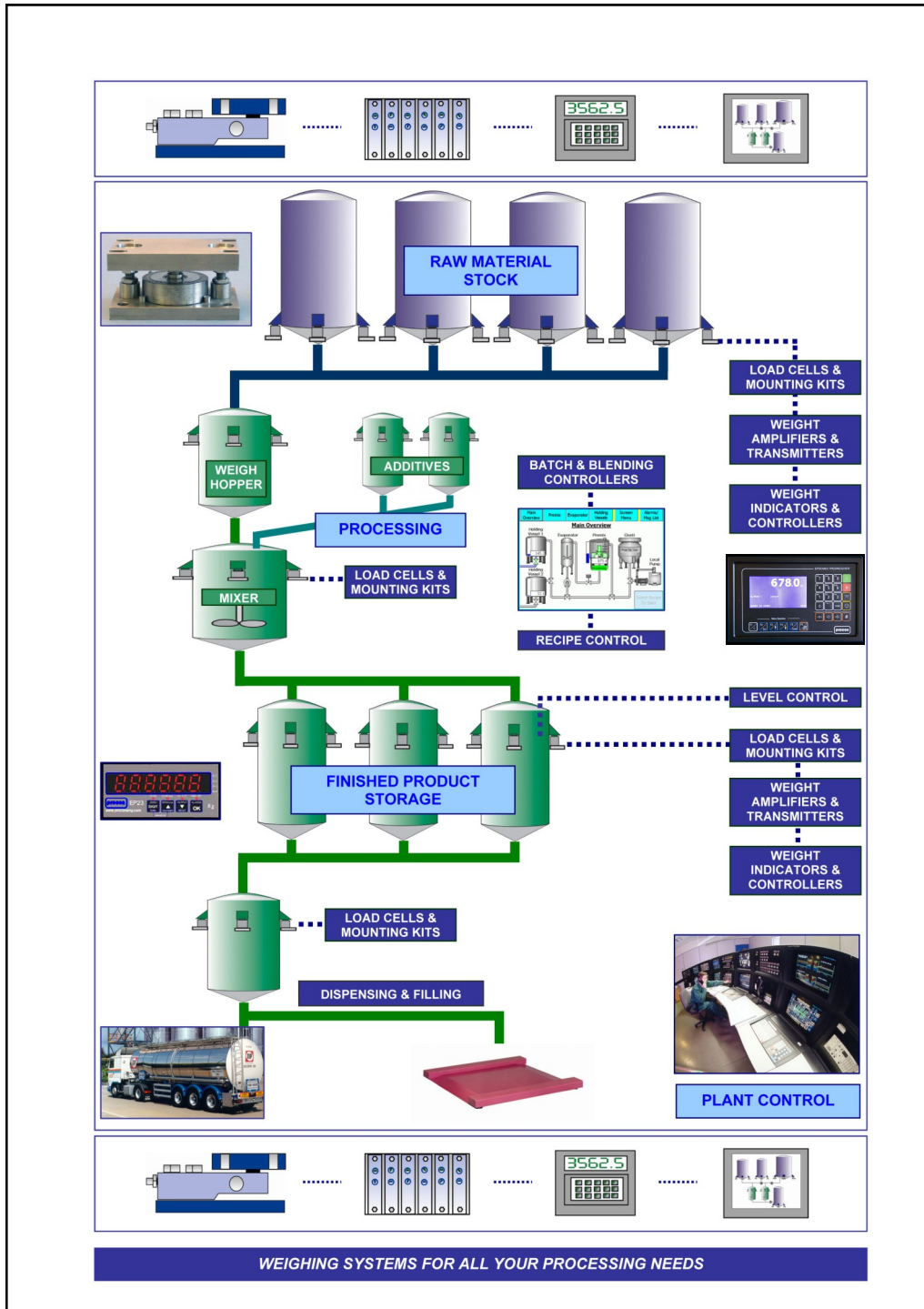


Loss in Weight Systems



Airport Weigh Frames (Manufactured to any size)





ATEX



Procon Engineering

A division of National Oilwell Varco UK Ltd

Trading Office
 Vestry Estate
 Otford Road
 Sevenoaks
 Kent
 TN16 5EL

Tel: 01732 781300
 Fax: 01732 781311
 e-mail: proconsales@nov.com
 web site: www.proconeng.com

Registered in England
 No. 873028

